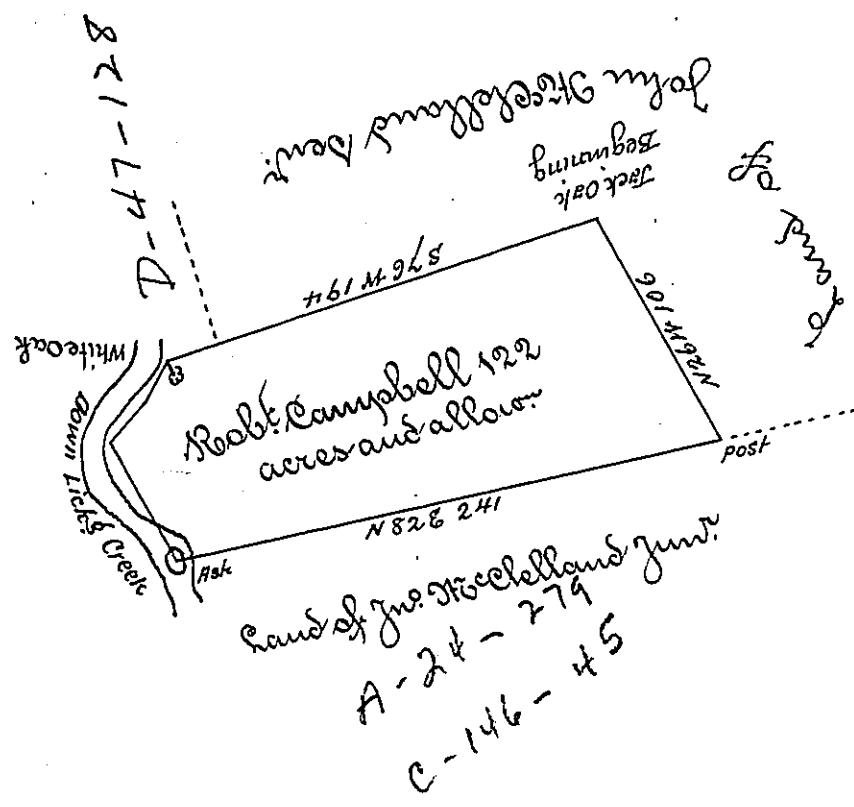


Courses & Distances -  
 Down Licking Creek  
 S 34 W 15 1/2  
 S 47 W 24  
 S 23 E 57  
 96 1/2



The Draught of a Tract of Land called \_\_\_\_\_ situate on Licking Creek Cum  
 berland County containing one Hundred Twenty Two acres with the usual  
 allowance of six acres & Cent. for Roads. Survey'd the 2<sup>d</sup> Day of December 17-  
 66 in Pursiance of an Order of Survey to Robert Campbell Bearing Date at  
 Philad<sup>a</sup> the 23<sup>d</sup> Day of Sep<sup>r</sup> A.D. 1766 and numbered 1338 -

To John Lukens Esq<sup>r</sup> D. G.  
 of Pennsylvania

ff

Wm<sup>o</sup> Hooley D. S.

IN TESTIMONY that the above is a copy of the original remaining on file in the  
 Department of Internal Affairs of Pennsylvania, made con-  
 formably to an Act of Assembly approved the 16th day of  
 February, 1833. I have hereunto set my Hand and caused  
 the Seal of said Department to be affixed at Harrisburg, this  
 first \_\_\_\_\_ day of \_\_\_\_\_ September \_\_\_\_\_ 1896.

*James [Signature]*

Secretary of Internal Affairs.